

Sports Mats



World market reference for sports mats



Widest range worldwide



Broad phthalate free range



Different embossings



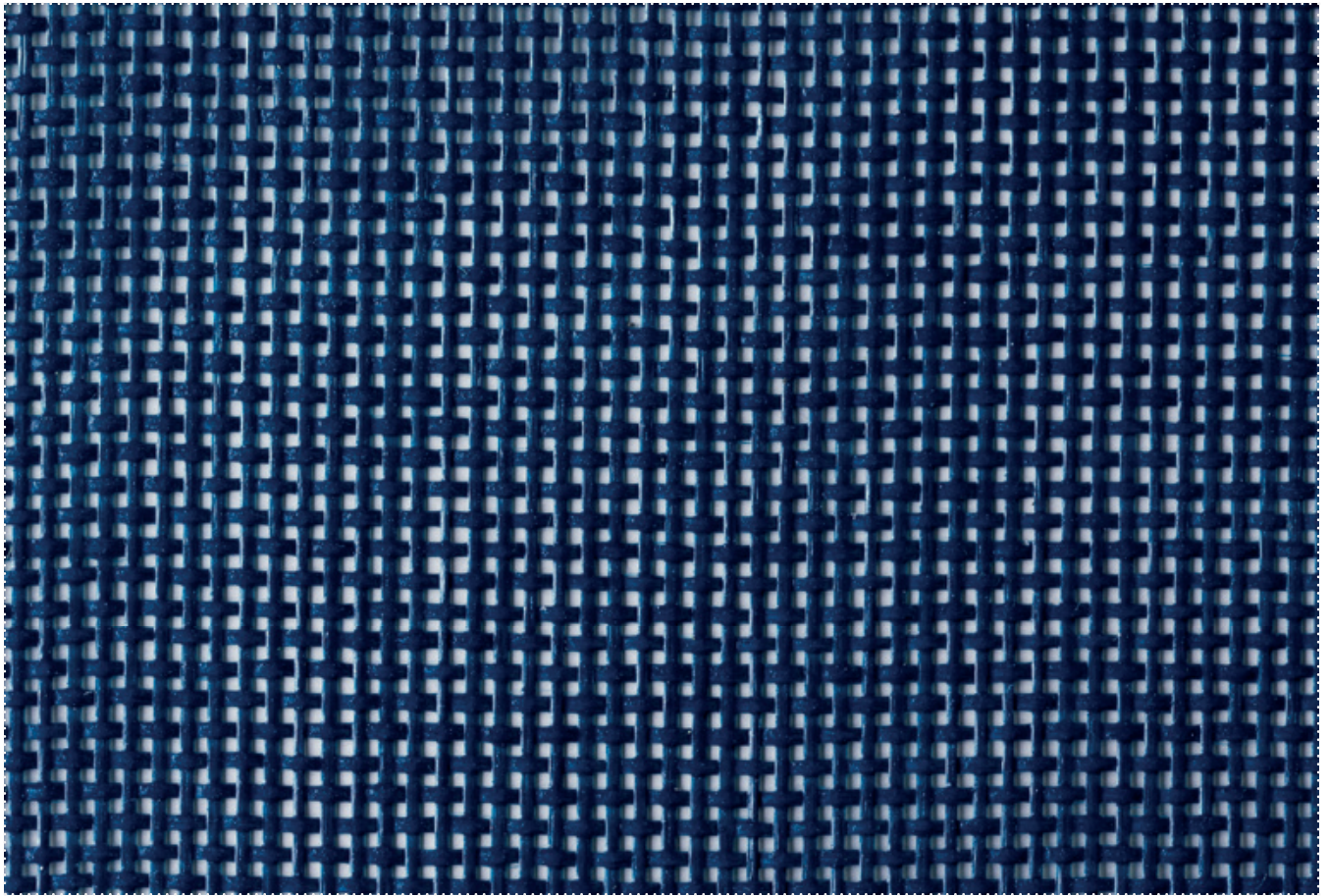
Single side and both side coated








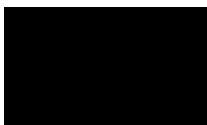
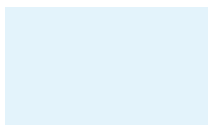


G2759 // G2700 // G7000 //
B7000 // G7667 // G7655 //
G7650 // Allround mesh



Allround mesh // W50500690 - M5509

Multi-use + 80% wind reduction // Vielseitig einsetzbar + 80% Windreduzierung // Multi-usage + 80% de réduction du vent // Multiuso + 80% de reducción de viento // Veelzijdig + 80% windreductie

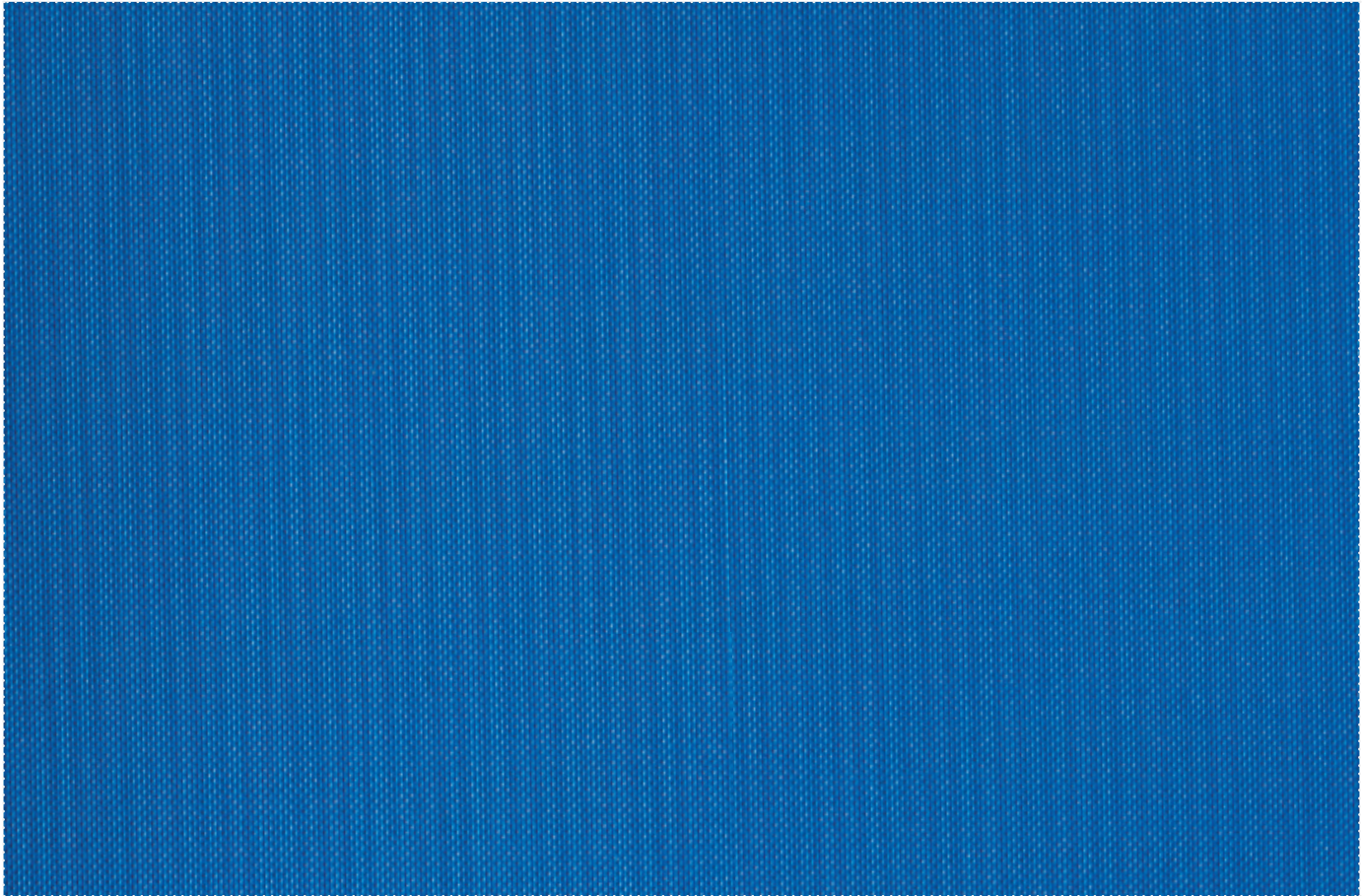


					
1398 ↔ 210 cm	1399 ↔ 210, 320 cm	3130 ↔ 210 cm	5601 ↔ 210 cm	6601 ↔ 320 cm	6602 ↔ 210 cm
					
7601 ↔ 210 cm	7999 ↔ 210 cm, 320 cm	9917 ↔ 210 cm	6168 On request // Auf Anfrage // Sur demande // Bajo pedido // Op verzoek	8104 On request // Auf Anfrage // Sur demande // Bajo pedido // Op verzoek	

Other colours on request // Andere Farben auf Anfrage // Autres coloris sur demande //
Otros colores bajo pedido // Andere kleuren op aanvraag

G7667

Phthalate free + dull non-marring // Phtalatfrei + matt nicht-reibend // Sans phtalate + mat non-frottant // Sin ftalatos + mate no abrasivo // Ftalaatvrij + mat niet-schurend



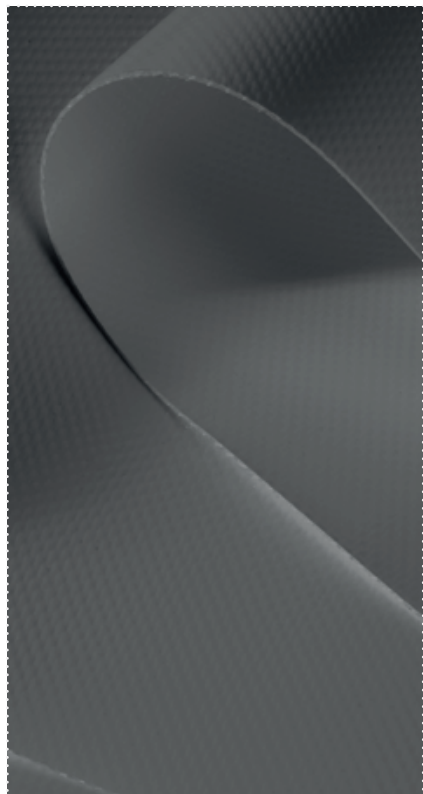
On request

Auf Anfrage // Sur demande // Bajo pedido // Op verzoek



B7000

Standard gym mat cover // Standard Gymnastikmattenbezug // Housse de tapis de gym standard // Cubierta de colchoneta estándar // Standaard turnmat cover



1024 - RAL 1003

↔ 250 cm



3001

↔ 250 cm



5007

↔ 250 cm, 300 cm



6001

↔ 250 cm, 300 cm



7001

↔ 250 cm, 300 cm



7999

↔ 250 cm



9002

↔ 300 cm

G7000

Phthalate free + glossy // Phtalatfrei + hochglanz // Sans phtalate + brillant // Sin ftalatos + brillante // Ftalaatvrij + glanzend



1024 - RAL 1003

↔ 250 cm



3001

↔ 250 cm



5007

↔ 250 cm



5029

↔ 250 cm

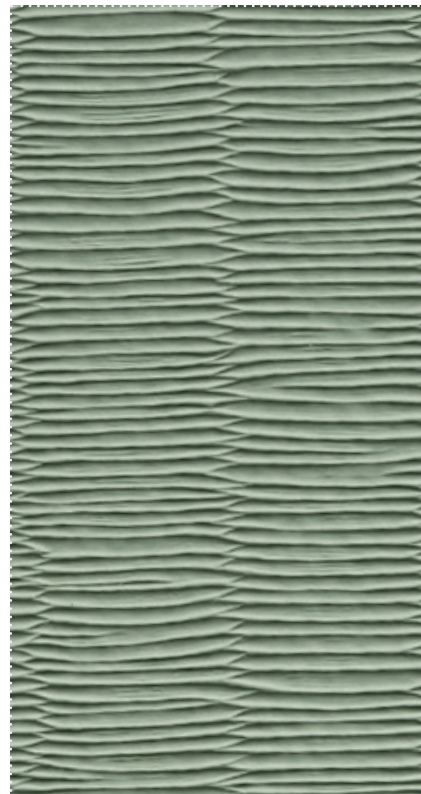


6001

↔ 250 cm

G7655

Phthalate free + tatami finish // Phtalatfrei + Tatami-Prägung // Sans phtalate + gaufrage tatami // Sin ftalatos + acabado tatami // Ftalaatvrij + tatami-afwerking



6969

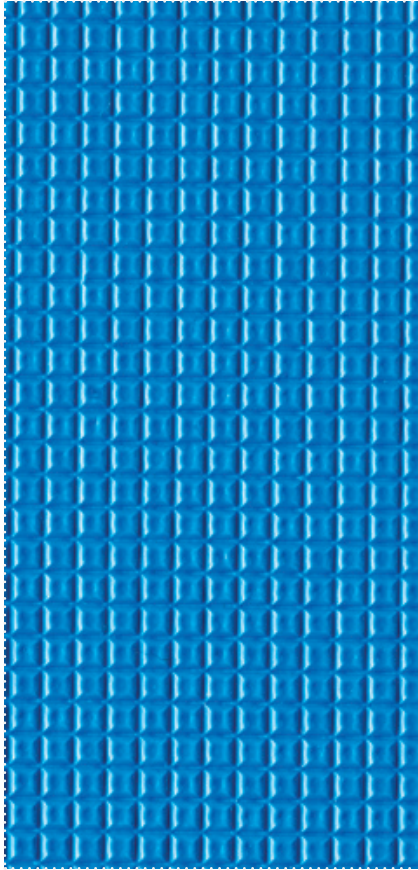
↔ 125cm



Other colours on request // Andere Farben auf Anfrage // Autres coloris sur demande // Otros colores bajo pedido // Andere kleuren op aanvraag

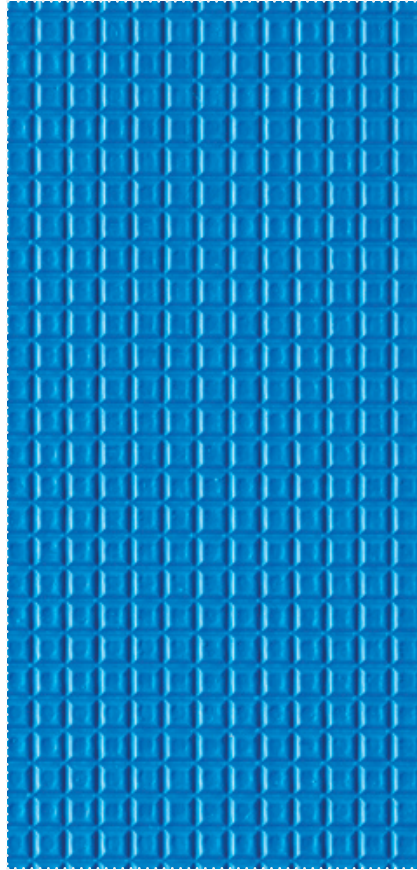
G2759

Phthalate free + anti-skid //
Phtalatfrei + antirutsch // Sans
phtalate + antidérapant // Sin
ftalatos + antideslizante // Ftalaatvrij
+ antislip



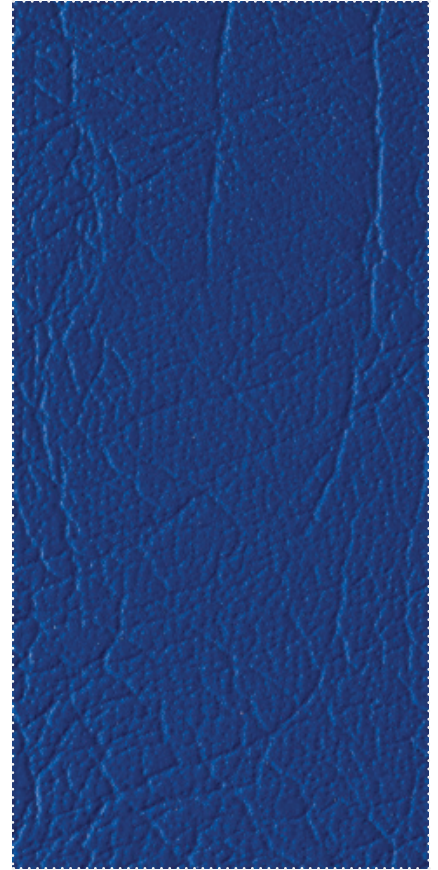
G2700

Phthalate free + anti-skid + flame
retardant // Phtalatfrei + antirutsch +
flammhemmend // Sans phtalate +
antidérapant + ignifuge // Sin ftalatos
+ antideslizante + ignífugo // Ftalaat-
vrij + antislip + vlamvertragend



G7650

Phthalate free + flame retardant
// Phtalatfrei + flammhemmend //
Sans phtalate + ignifuge // Sin
ftalatos + ignífugo // Ftalaatvrij +
vlamvertragend



5999

←→ 205 cm, 218 cm



5999

←→ 218 cm



5996

←→ 218 cm



7003

←→ 205 cm, 218 cm



7003

←→ 218 cm



Advantages

Vorteile // Avantages // Ventajas // Voordelen



Widest range worldwide

Grösste Kollektion weltweit
La plus grande gamme mondiale
La gama más amplia del mundo
Grootste collectie wereldwijd



Different embossings

Verschiedene Prägungen
Différents gaufrages
Diferentes acabados
Verschillende embossings



Broad phthalate free range

Grosse phtalatfreie Kollektion
Grande gamme sans phtalate
Amplia gama sin ftalatos
Groot ftalaatvrij aanbod



Single side and both side coated

Einseitig und beidseitig beschichtet
Enduit d'une face ou deux faces
Revestimiento simple o por ambos lados
Enkelzijdig en tweezijdig gecoat

Different embossings

The different embossings that are available are: **dull, anti-skid, leather grain, judo mat embossing and sateen embossing.**

Die unterschiedlichen verfügbaren Prägungen sind: matt, antirutsch, Ledernarbe, Judomatteprägung und Satinprägung.

Les différents gaufrages disponibles sont : mat, antidérapant, grain cuir, gaufrage tapis de judo et satiné.

Los diferentes acabados disponibles son: mate, antideslizante, piel sintética, colchoneta para judo y acabado de satin.

De verschillende beschikbare embossings zijn: mat, antislip, ledernerfafwerking, judomatafwerking en satijnembossing.



Technical specifications

Technische Daten // Données techniques // Datos técnicos // Technische specificaties

Allround mesh W50500690 M5509 Multi-use + 80% wind reduction	G7667 Phthalate free + dull non-marring	B7000 Standard gym mat cover	G7000 Phthalate free + glossy	G7655 Phthalate free + tatami finish	G2759 Phthalate free + anti-skid	G2700 Phthalate free + anti-skid + flame retardant	G7650 Phthalate free + flame retardant
---	--	---------------------------------	----------------------------------	---	-------------------------------------	---	---

Total Weight - ISO 2286/2:2016
Gesamtgewicht // Poids total // Peso total // Totaal gewicht

250 g/m ²	670 g/m ²	550 g/m ²	550 g/m ²	720 g/m ²	600 g/m ²	700 g/m ²	600 g/m ²
----------------------	----------------------	----------------------	----------------------	----------------------	----------------------	----------------------	----------------------

Composition
Zusammensetzung // Composition // Composición // Samenstelling

PES + PVC

Fabric (Warp / Weft)
DIN ISO 2060:1994
Gewebe // Tissu // Tejido // Weefsel

PES, 1100 dtex
PES, 1100 dtex

Lacquering
Lackierung // Laquage // Tipo lacado // Lacquering

-	Top: dull non marring	-	Bottom: glossy	Top: dull	-	-	-
---	-----------------------	---	----------------	-----------	---	---	---

Breaking Strength (Warp / Weft)
ISO 1421/1:2016
Höchstzugkraft // Résistance rupture // Resistencia a la tracción // Treksterkte

(NBN EN ISO 1421_2017)	2500 N/5cm	2500 N/5cm	2500 N/5cm	2500 N/5cm	2500 N/5cm	2500 N/5cm	2500 N/5cm	2500 N/5cm
≥ 1600 N/5cm	1800 N/5cm	1800 N/5cm	1800 N/5cm	1800 N/5cm	1800 N/5cm	2000 N/5cm	2000 N/5cm	1800 N/5cm
≥ 1600 N/5cm								

Tear Strength (Warp / Weft)
DIN 53363:2003
Weiterreisskraft // Résistance à la déchirure // Resistencia al desgarro // Scheurweerstand

≥ 400 N	250 N	250 N	250 N	250 N	270 N	270 N	250 N
≥ 400 N	250 N	250 N	250 N	250 N	270 N	270 N	250 N

Adhesion - ISO 2411:2017
Haftung // Adhérence // Adhesión // Hechting

-	90 N/5cm	90 N/5cm	90 N/5cm	90 N/5cm	90 N/5cm	90 N/5cm	90 N/5cm
---	----------	----------	----------	----------	----------	----------	----------

Temperature resistance
EN 1876/1:1998
Temperaturbeständigkeit // Tenue à la température // Resistencia térmica // Temperatuurbestendigheid

-30/+70 °C	-40/+70 °C	-40/+70 °C	-40/+70 °C	-40/+70 °C	-40/+70 °C	-40/+70 °C	-40/+70 °C
------------	------------	------------	------------	------------	------------	------------	------------

Light Fastness - ISO 105 B02:2014
Lichtechtheid // Tenue à la lumière // Solidez color // Lichtechtheit

6-8	7-8	7-8	7-8	7-8	7-8	7-8	7-8
-----	-----	-----	-----	-----	-----	-----	-----

Fire Behaviour - ISO 3795:1989
Brennverhalten // Reaction au feu // Resistencia al fuego // Brandgedrag

-	(ISO 3795: 1989)	(ISO 3795: 1989)	(ISO 3795: 1989)	(ISO 3795: 1989)	(ISO 3795: 1989)	(ISO 3795: 1989)	(NF P 92 507: 2004)	(NF P 92 507: 2004)
	< 100 mm/min	< 100 mm/min	< 100 mm/min	< 100 mm/min	< 100 mm/min	< 100 mm/min	M2	M2

Reaction to Fire - EN 13501-1:2018
Reaktion auf Feuer // Réaction au feu // Reacción al fuego // Reactie op vuur

-	-	-	-	-	-	-	B(fl)-s1	B(fl)-s1
---	---	---	---	---	---	---	----------	----------



Registration, Evaluation, Authorization and restriction of Chemicals



Recyclable fabric
Recyclable Textiles
Textiles recyclables
Productos reciclables
Recycleerbaar textiel



Slitting (width) on request
Schneiden (Breite) auf Anfrage
Tronçonnage (largeur) sur demande
Cortar (ancho) bajo pedido
Snijden (breedte) op aanvraag



Sustainable options available
Nachhaltige Optionen verfügbar
Options durables disponibles
Opciones sostenibles disponibles
Duurzame opties beschikbaar



your guide to coated fabrics

Go to sioline.com for more information.
Fabriekstraat 23 - 8850 Ardoole - Belgium
+32 (0) 51 740 900 - info@sioline.com - sioline.com



Produced in Belgium & France in ISO 9001:2015 certified plants

All our technical characteristics are indicative. Please note that all information given in this document is intended to be useful and informative and is correct to the best of our knowledge at time of print. No liability can be accepted for inaccuracies or omissions. All Sioline products comply with the Reach Regulation 1907/2006/CE. Last modified: 23 juli 2024 11:53 a.m.

