

# Sport Mats



World market leader for sportmats



Widest range  
worldwide



Broad phthalate  
free range



Different  
embossings

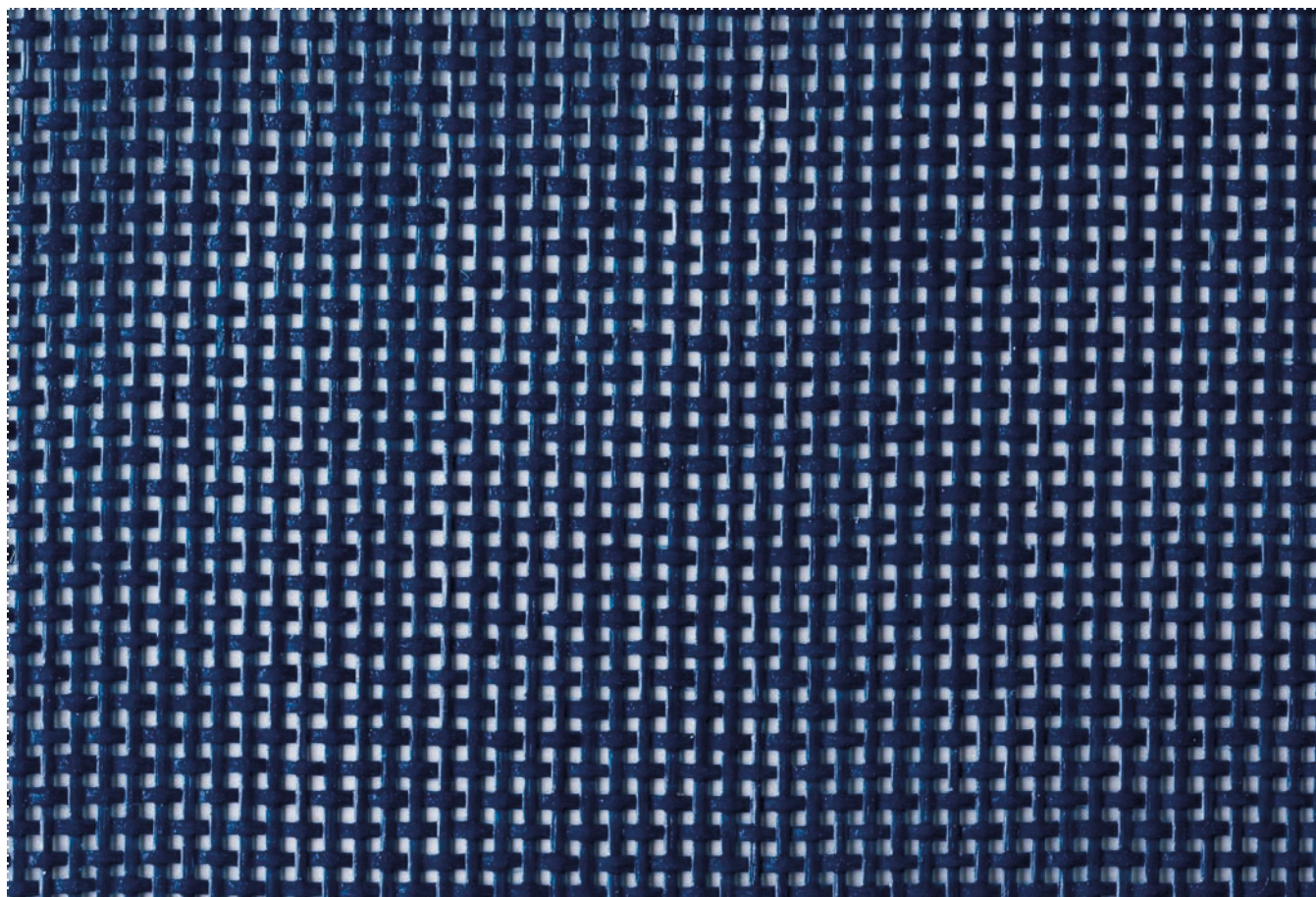









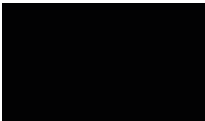
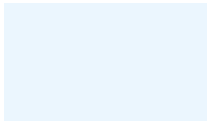


Single side and  
both side coated

G2759 // G2700 // G7000 //  
B7000 // G7667 // G7655 //  
G7650 // Allround mesh

## Allround mesh // W50500690 - M5509

Multi-use + 80% wind reduction // Vielseitig einsetzbar + 80% Windreduzierung // Multi-usage + 80% de réduction du vent // Multiuso + 80% de reducción de viento // Veelzijdig + 80% windreductie

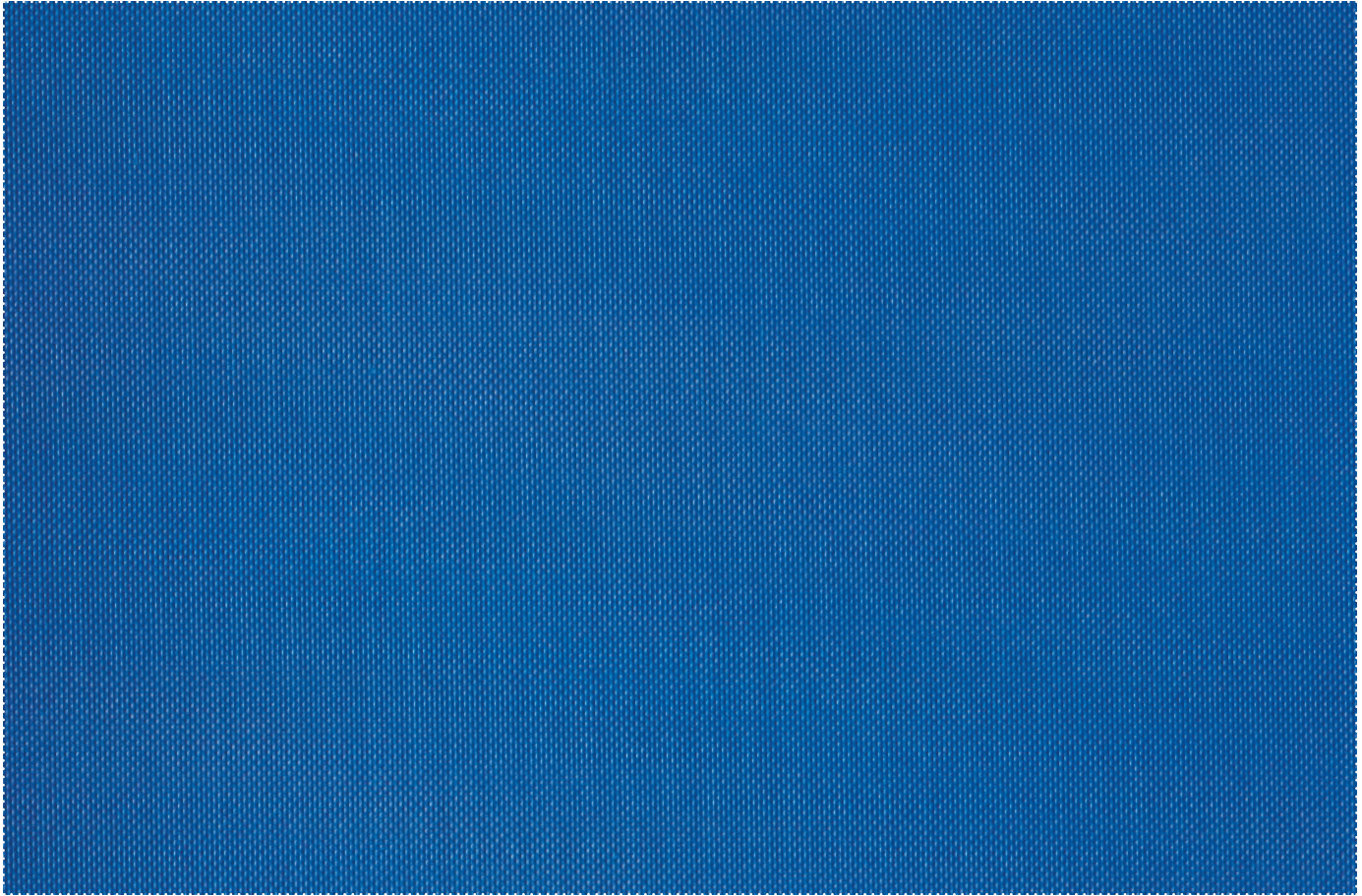


					
<b>1398</b> ↔ 210 cm	<b>1399</b> ↔ 210, 320 cm	<b>3130</b> ↔ 210 cm	<b>5601</b> ↔ 210 cm	<b>6601</b> ↔ 320 cm	<b>6602</b> ↔ 210 cm
					
<b>7601</b> ↔ 210 cm	<b>7999</b> ↔ 210 cm, 320 cm	<b>9917</b> ↔ 210 cm	<b>6168</b> On request // Auf Anfrage // Sur demande // Bajo pedido // Op verzoek	<b>8104</b> On request // Auf Anfrage // Sur demande // Bajo pedido // Op verzoek	

Other colours on request // Andere Farben auf Anfrage // Autres coloris sur demande //  
Otros colores bajo pedido // Andere kleuren op aanvraag

## **G7667**

Phthalate free + dull non-marring // Phtalatfrei + matt nicht-reibend // Sans phtalate + mat non-frottant // Sin ftalatos + mate no abrasivo // Ftalaatvrij + mat niet-schurend



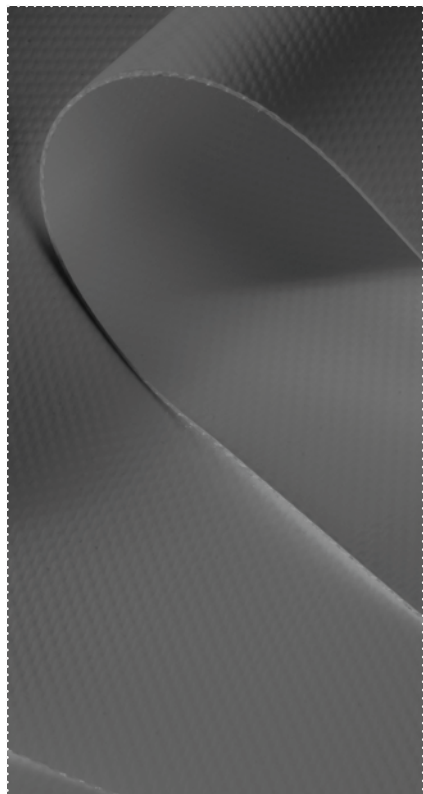
### **On request**

Auf Anfrage // Sur demande // Bajo pedido // Op verzoek



## B7000

Standard gym mat cover // Standard Gymnastikmattenbezug // Housse de tapis de gym standard // Cubierta de colchoneta estándar // Standaard turnmat cover



**1024 - RAL 1003**

←→ 250 cm



**3001**

←→ 250 cm



**5007**

←→ 250 cm, 300 cm



**6001**

←→ 250 cm, 300 cm



**7001**

←→ 250 cm, 300 cm



**7999**

←→ 250 cm



**9002**

←→ 300 cm

## G7000

Phthalate free + glossy // Phtalatfrei + hochglanz // Sans phtalate + brillant // Sin ftalatos + brillante // Ftalaatvrij + glanzend



**1024 - RAL 1003**

←→ 250 cm



**3001**

←→ 250 cm



**5007**

←→ 250 cm



**5029**

←→ 250 cm

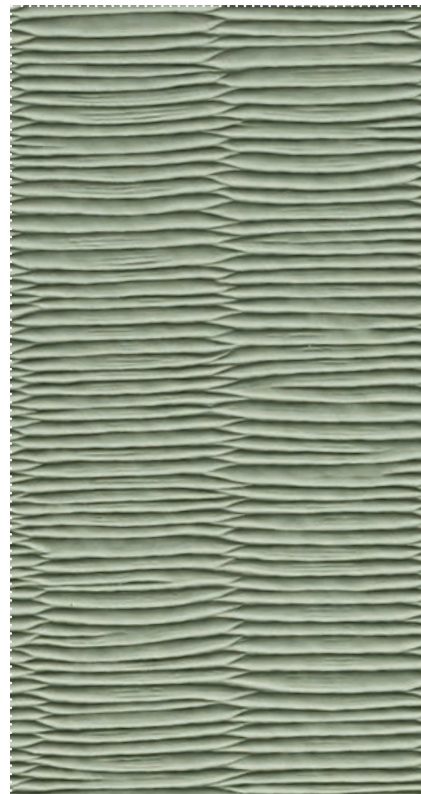


**6001**

←→ 250 cm

## G7655

Phthalate free + tatami finish // Phtalatfrei + Tatami-Prägung // Sans phtalate + gaufrage tatami // Sin ftalatos + acabado tatami // Ftalaatvrij + tatami-afwerking



**6969**

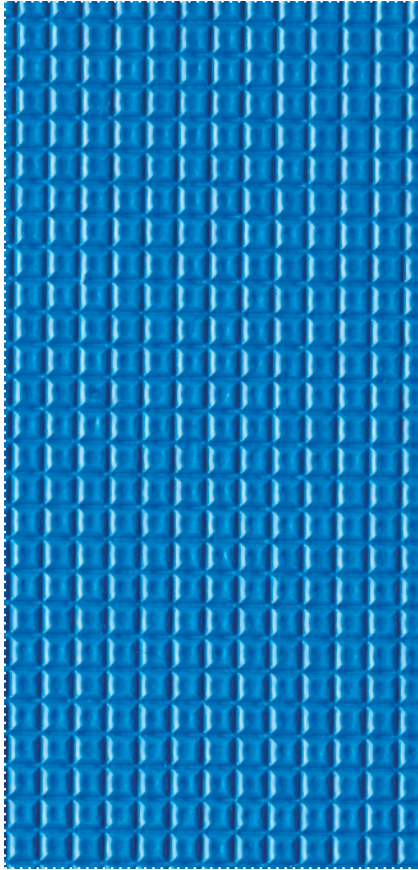
←→ 125cm



Other colours on request // Andere Farben auf Anfrage // Autres coloris sur demande // Otros colores bajo pedido // Andere kleuren op aanvraag

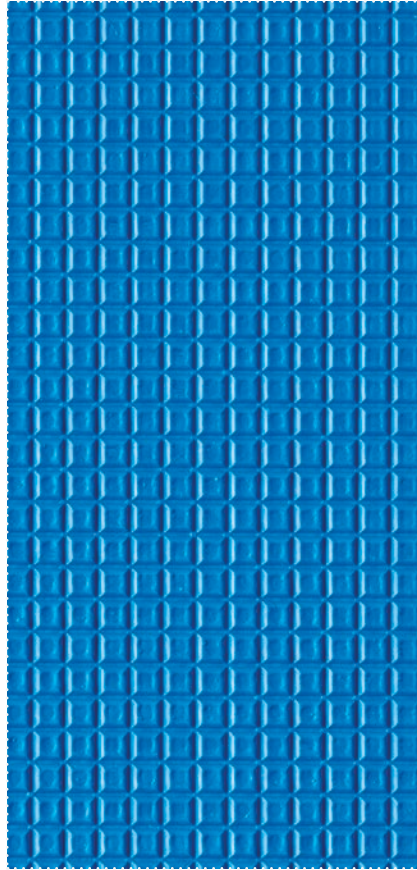
## G2759

Phthalate free + anti-skid //  
Phtalatfrei + antirutsch // Sans  
phtalate + antidérapant // Sin  
ftalatos + antideslizante // Ftalaatvrij  
+ antislip



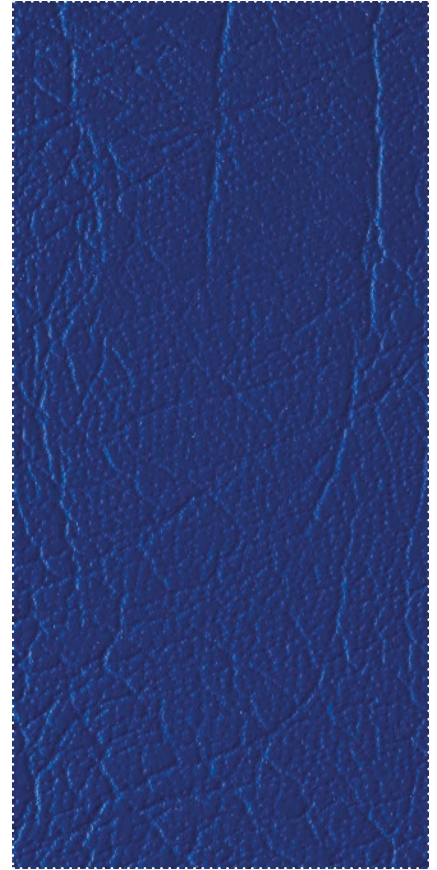
## G2700

Phthalate free + anti-skid + flame  
retardant // Phtalatfrei + antirutsch +  
flammhemmend // Sans phtalate +  
antidérapant + ignifuge // Sin ftalatos  
+ antideslizante + ignífugo // Ftalaat-  
vrij + antislip + vlamvertragend



## G7650

Phthalate free + flame retardant  
// Phtalatfrei + flammhemmend //  
Sans phtalate + ignifuge // Sin  
ftalatos + ignífugo // Ftalaatvrij +  
vlamvertragend



**5999**

←→ 205 cm, 218 cm



**5999**

←→ 205 cm, 218 cm



**5996**

←→ 218 cm



**7003**

←→ 205 cm, 218 cm



**7003**

←→ 218 cm



## Advantages

Vorteile // Avantages // Ventajas // Voordelen



### Widest range worldwide

Grösste Kollektion weltweit  
La plus grande gamme mondiale  
La gama más amplia del mundo  
Grootste collectie wereldwijd



### Different embossings

Verschiedene Prägungen  
Différents gaufrages  
Diferentes acabados  
Verschillende embossings



### Broad phthalate free range

Grosse phtalatfreie Kollektion  
Grande gamme sans phtalate  
Amplia gama sin ftalatos  
Groot ftalaatvrij aanbod



### Single side and both side coated

Einseitig und beidseitig beschichtet  
Enduit d'une face ou deux faces  
Revestimiento simple o por ambos lados  
Enkelzijdig en tweezijdig gecoat

## Different embossings

**The different embossings that are available are: dull, anti-skid, leather grain, judo mat embossing and sateen embossing.**

Die unterschiedlichen verfügbaren Prägungen sind:  
matt, antirutsch, Ledernarbe, Judomatteprägung und  
Satinprägung.

Les différents gaufrages disponibles sont : mat,  
antidérapant, grain cuir, gaufrage tapis de judo et satiné.

Los diferentes acabados disponibles son: mate,  
antideslizante, piel sintética, colchoneta para judo y acabado  
de satin.

De verschillende beschikbare embossings zijn: mat, antislip,  
ledernerfafwerking, judomatafwerking en satijnembossing.



## Technical specifications

Technische Daten // Données techniques // Datos técnicos // Technische specificaties

	Allround mesh W50500690 M5509 Multi-use + 80% wind reduction	G7667 Phthalate free + dull non-marring	B7000 Standard gym mat cover	G7000 Phthalate free + glossy	G7655 Phthalate free + tatami finish	G2759 Phthalate free + anti-skid	G2700 Phthalate free + anti-skid + flame retardant	G7650 Phthalate free + flame retardant
<b>Total Weight</b> - ISO 2286/2:2016 Gesamtgewicht // Poids total // Peso total // Totaal gewicht	250 g/m <sup>2</sup>	670 g/m <sup>2</sup>	550 g/m <sup>2</sup>	550 g/m <sup>2</sup>	720 g/m <sup>2</sup>	600 g/m <sup>2</sup>	700 g/m <sup>2</sup>	600 g/m <sup>2</sup>
<b>Composition</b> Zusammensetzung // Composition // Composición // Samenstelling	PES + PVC							
<b>Fabric (Warp / Weft)</b> DIN ISO 2060:1994 Gewebe // Tissu // Tejido // Weefsel	PES, 1100 dtex PES, 1100 dtex							
<b>Lacquering</b> Lackierung // Laquage // Tipo lacado // Lacquering	-	Top: dull non marring	-	Bottom: glossy	Top: dull	-	-	-
<b>Breaking Strength (Warp / Weft)</b> ISO 1421/1:2016 Höchstzugkraft // Résistance rupture // Resistencia a la tracción // Treksterkte	(NBN EN ISO 1421_2017) ≥ 1600 N/5cm ≥ 1600 N/5cm	2500 N/5cm 1800 N/5cm	2500 N/5cm 1800 N/5cm	2500 N/5cm 1800 N/5cm	2500 N/5cm 1800 N/5cm	2500 N/5cm 2000 N/5cm	2500 N/5cm 2000 N/5cm	2500 N/5cm 1800 N/5cm
<b>Tear Strength (Warp / Weft)</b> DIN 53363:2003 Weiterreisskraft // Résistance à la déchirure // Resistencia al desgarro // Scheurweerstand	≥ 400 N ≥ 400 N	250 N 250 N	250 N 250 N	250 N 250 N	250 N 250 N	270 N 270 N	270 N 270 N	250 N 250 N
<b>Adhesion</b> - ISO 2411:2017 Haftung // Adhérence // Adhesión // Hechting	-	90 N/5cm	90 N/5cm	90 N/5cm	90 N/5cm	90 N/5cm	90 N/5cm	90 N/5cm
<b>Temperature resistance</b> EN 1876/1:1998 Temperaturbeständigkeit // Tenue à la température // Resistencia térmica // Temperatuurbestendigheid	-30/+70 °C	-40/+70 °C	-40/+70 °C	-40/+70 °C	-40/+70 °C	-40/+70 °C	-40/+70 °C	-40/+70 °C
<b>Light Fastness</b> - ISO 105 B02:2014 Lichtechtheid // Tenue à la lumière // Solidez color // Lichtechtheid	6-8	7-8	7-8	7-8	7-8	7-8	7-8	7-8
<b>Fire Behaviour</b> - ISO 3795:1989 Brennverhalten // Reaction au feu // Resistencia al fuego // Brandgedrag	-	(ISO 3795: 1989) < 100 mm/min	(ISO 3795: 1989) < 100 mm/min	(ISO 3795: 1989) < 100 mm/min	(ISO 3795: 1989) < 100 mm/min	(ISO 3795: 1989) < 100 mm/min	(NF P 92 507: 2004) M2	(NF P 92 507: 2004) M2
<b>Reaction to Fire</b> - EN 13501-1:2018 Reaktion auf Feuer // Réaction au feu // Reacción al fuego // Reactie op vuur	-	-	-	-	-	-	B(fl)-s1	B(fl)-s1



Registration,  
Evaluation,  
Authorization  
and restriction  
of Chemicals



Recyclable fabric  
Recyclable Textiles  
Textiles recyclables  
Productos reciclables  
Recycleerbaar textiel



Slitting (width) on request  
Schneiden (Breite) auf Anfrage  
Tronçonnage (largeur) sur demande  
Cortar (ancho) bajo pedido  
Snijden (breedte) op aanvraag



Sustainable options available  
Nachhaltige Optionen verfügbar  
Options durables disponibles  
Opciones sostenibles disponibles  
Duurzame opties beschikbaar